

OSAM DPE

Kimmo Raatikainen

EC/ACTS project DOLMEN (AC036)

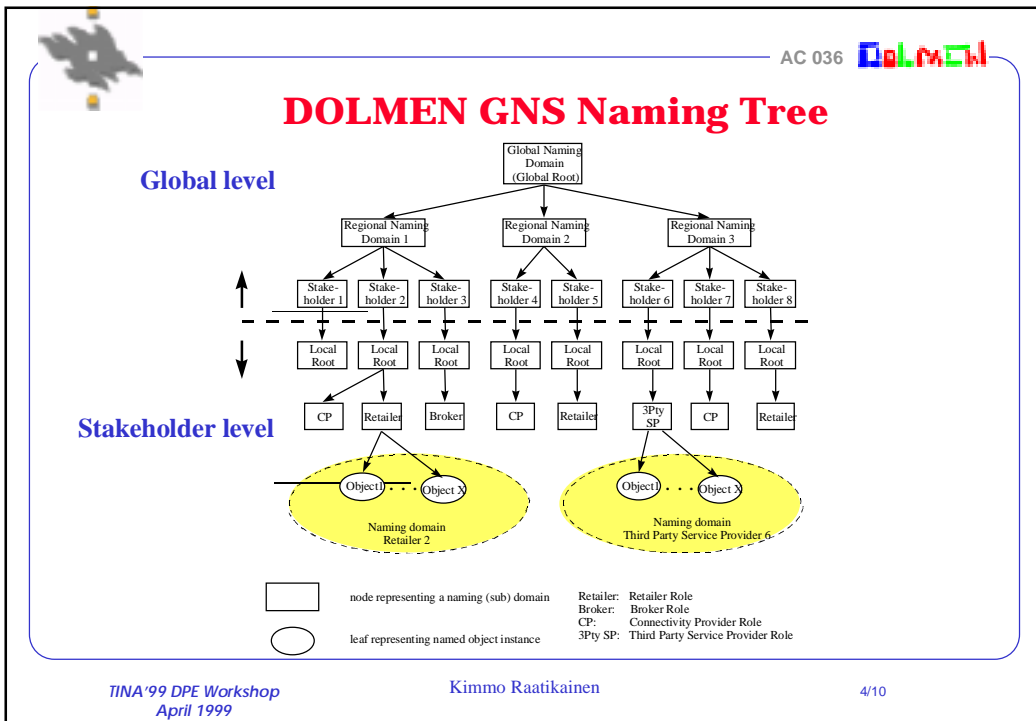
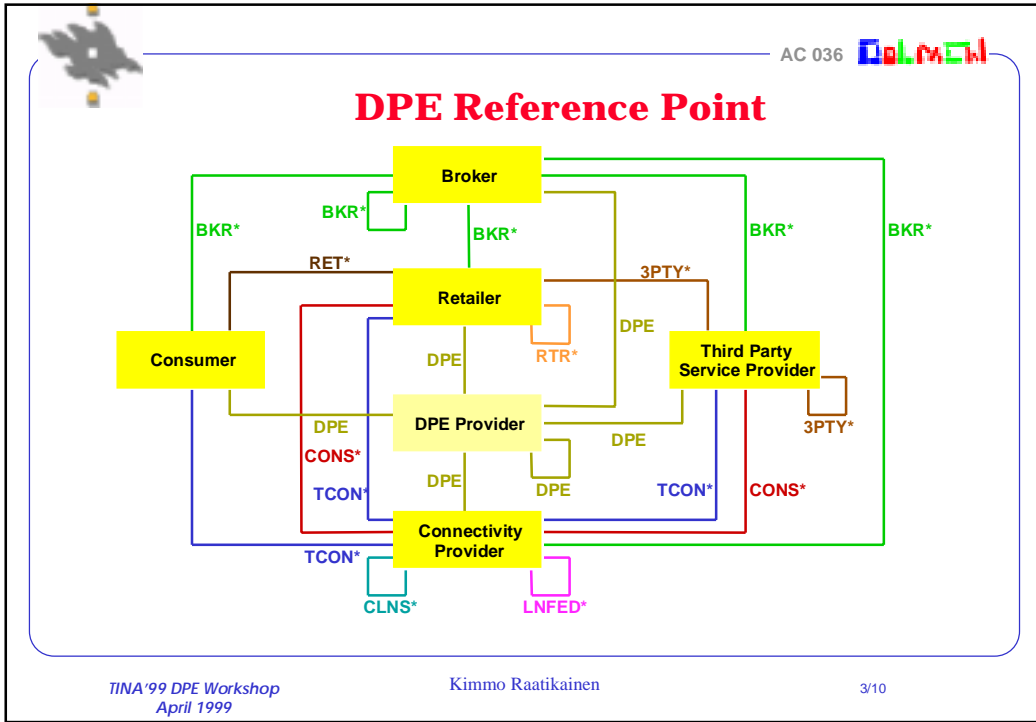
University of Helsinki, Finland

<http://www.fub.it/dolmen>

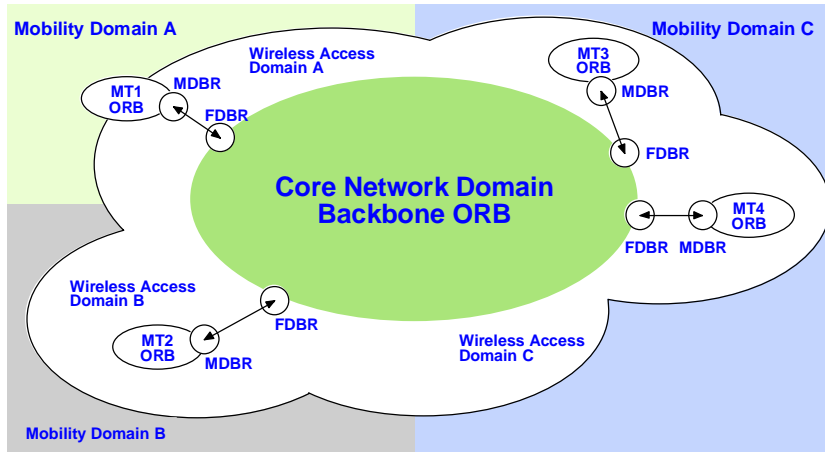
Kimmo.Raatikainen@cs.Helsinki.FI

Presentation Outline

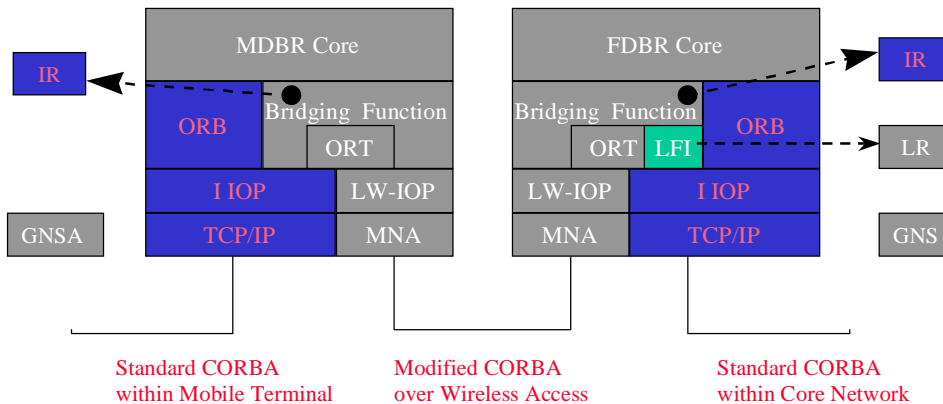
- **OSAM Business Model Extensions for Terminal Mobility**
 - DPE Provider Role
- **DPE Support for Terminal Mobility**
 - Naming Federation
- **Bridging and Terminal Mobility Support in CORBA**
 - DOLMEN Bridging Concepts and Implementation
 - Light-Weight Inter-ORB Protocol
 - More elements in Terminal Mobility at DPE level
- **OMG Activities on Wireless Access and Mobility**





Bridging Mobile Terminal



DOLMEN DPE Bridge







AC 036 

Light-Weight IOP

- **LW-IOP has same functionality as GIOP**
- **Reduced headers**
- **Efficient Data Representation**
- **Integer compression**
- **Coded representation of text and binary strings through caching**
- **Explicit acknowledgement to messages**
- **New messages to support handover**

*TINA'99 DPE Workshop
April 1999* Kimmo Raatikainen 7/10



AC 036 

New Messages in LW-IOP

- **OpenConnection**
- **Acknowledgement**
- **HandoverRequest**
- **Synchronise**
- **TunnelHeader**

*TINA'99 DPE Workshop
April 1999* Kimmo Raatikainen 8/10

Other Issues in Terminal Mobility

- **Relocatable Objects**
 - Relocatable Object Group Identifier (ROI)
 - Relocatable Object Reference (ROR)
- **Location Register**
 - ROI <-> FDBR mapping
 - interface to insert, replace, and query
- **Global Naming Service**

OMG Activited on Wireless Access and Mobility

- **RFI: telecom/98-06-10**
- **RFI Responses: telecom/98-08-nn**
 - Ericsson, Bellcore, Deutsche Telekom, Kent Rifge, DOLMEN
- **White paper: telecom/98-11-09**
- **draft FRP: telecom/99-04-02**
 - to be issued in OMG May Meeting
 - Telecom DTF commenting until April 23 (noon GMT):
telecom@omg.org